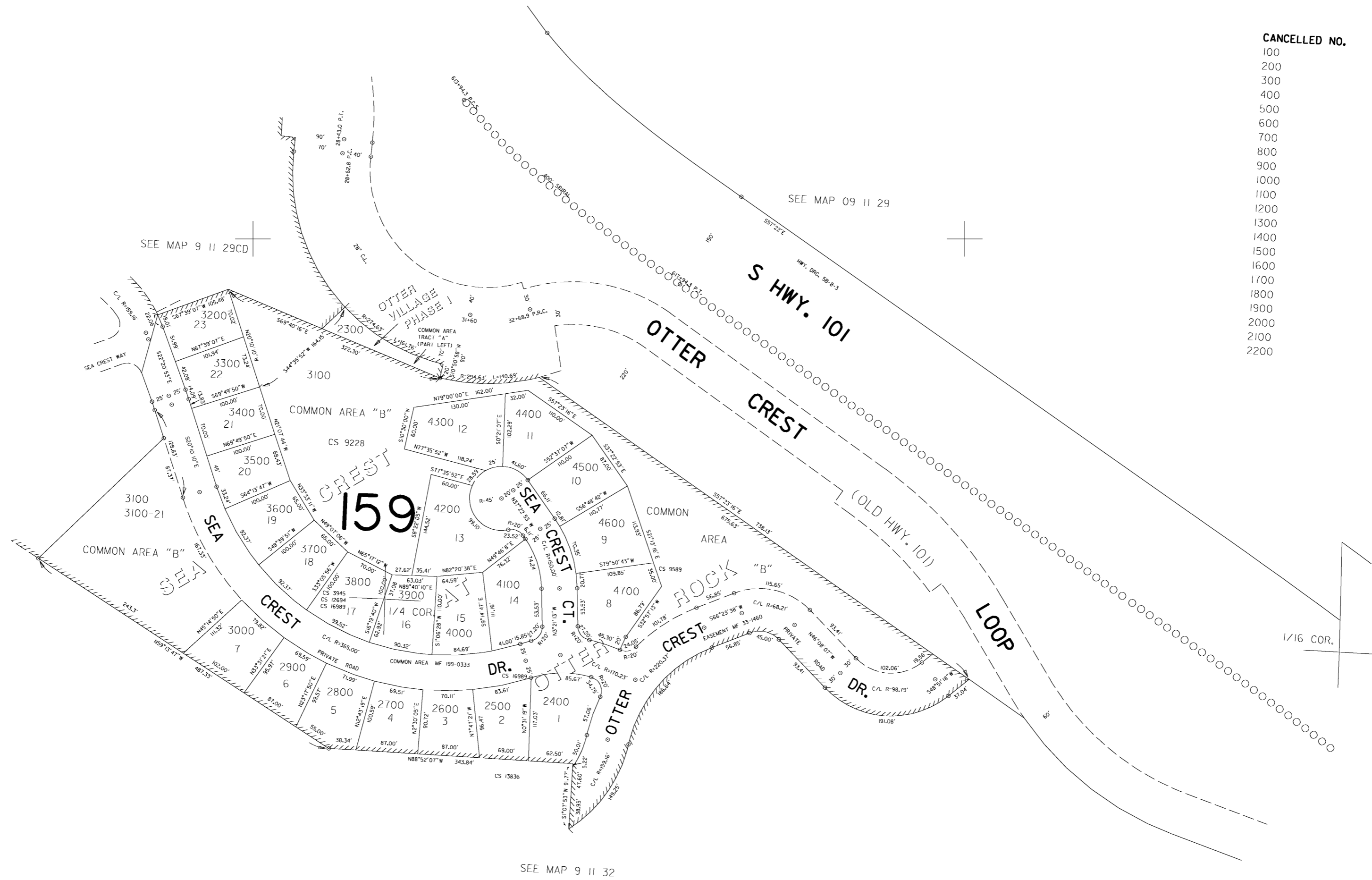


THIS MAP WAS PREPARED FOR  
ASSESSMENT PURPOSE ONLY

NE1/4 NW1/4 SEC. 32 T.9S. R.11W. W.M.  
LINCOLN COUNTY  
1" = 100'

9 11 32BA

- CANCELLED NO.
- 100
  - 200
  - 300
  - 400
  - 500
  - 600
  - 700
  - 800
  - 900
  - 1000
  - 1100
  - 1200
  - 1300
  - 1400
  - 1500
  - 1600
  - 1700
  - 1800
  - 1900
  - 2000
  - 2100
  - 2200



SEE MAP 9 11 29CD

SEE MAP 09 11 29

SEE MAP 9 11 32

MADE 04/07/99 DOR

7,277,500

416,000

9 11 32BA